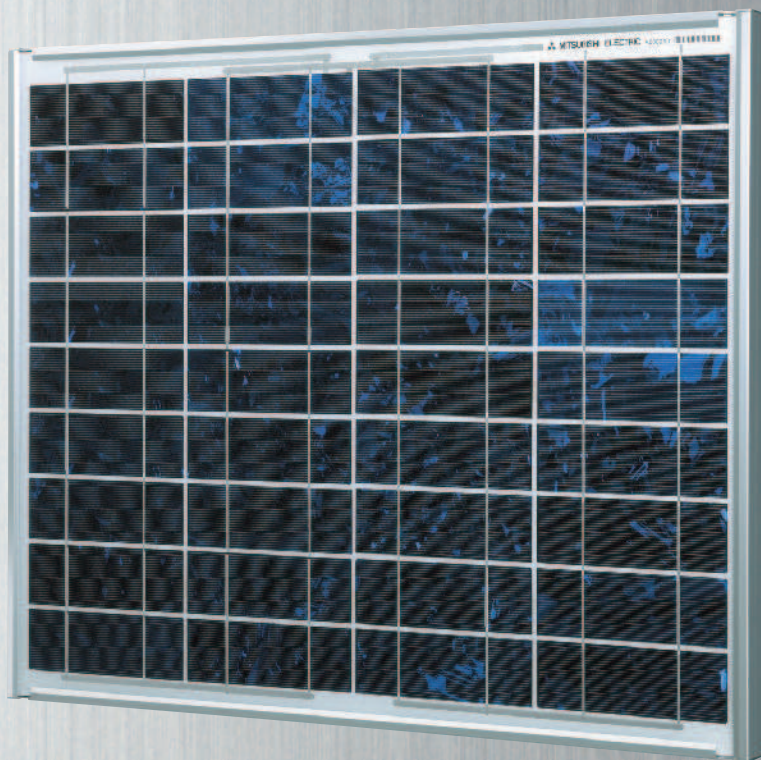


EF series

PV-EF52MS 52Wp
 PV-EF46MS 46Wp
 PV-EF40MS 40Wp
 PV-EF35MS 35Wp

**T
i
n
o
n
a
l
i
t
y**



Wide Range of Line Up

- 35Wp, 40Wp, 46Wp, 52Wp

Minimum Tolerance : -0%

(Maximum Tolerance : +15%)

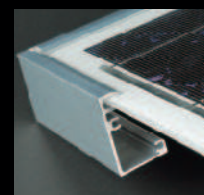
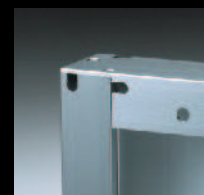
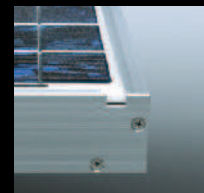
Junction Box

- Hinge Structure Junction Box
- Highly Reliable Bypass Diode



Frame Design

- Better Water Drainage Structure
- Higher Tensile Strength Structure
- High-Corrosion Resistant Frame



High Efficiency

- Solder-coatingless cells
- Fine Grid Electrodes
- BSF (Back Surface Field) Structure
- Anti-Reflective Coating
- Back Film Reflected Light
- High Reflectance Back Film
- Celium-Free/High-Transmittance Glass
- High Power in Actual Use

High Reliability

- Original derating designing concept
- Straight Tabs
- Double-Sided Independent Tabs
- Lower slope of module frame
- Max. System Voltage 600V with Three-Layer Structure Back Film

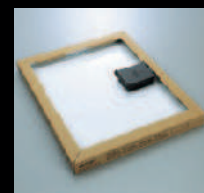
High Safety

- Conformity with IEC61215 2nd edition,

Eco-Friendly

- Lead-free solder PV module
- Manufactured in the plant certified ISO 14001
- Recyclable steel pallets

Package Design

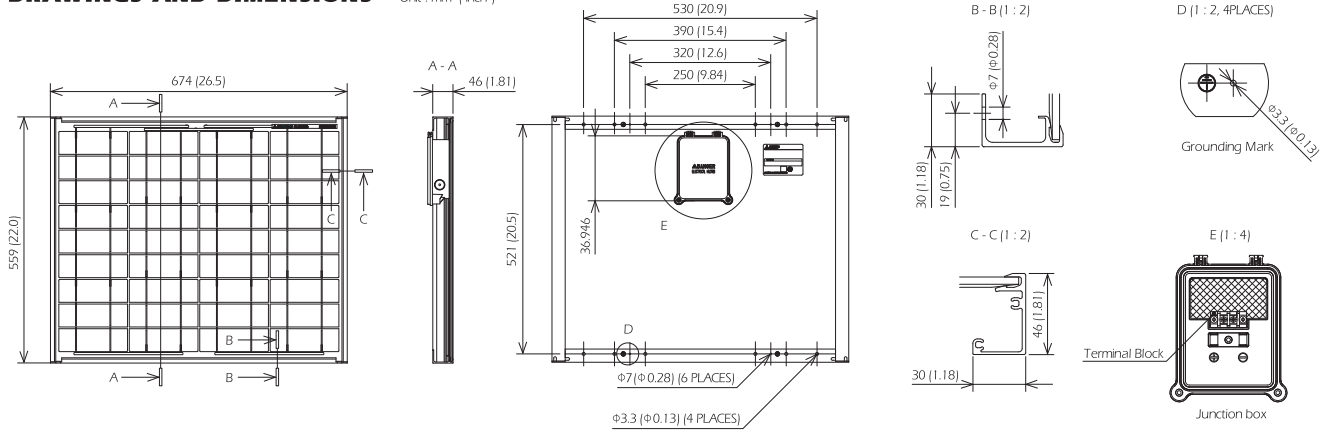


SPECIFICATION SHEET

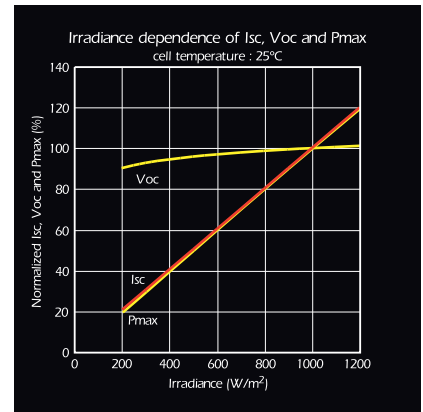
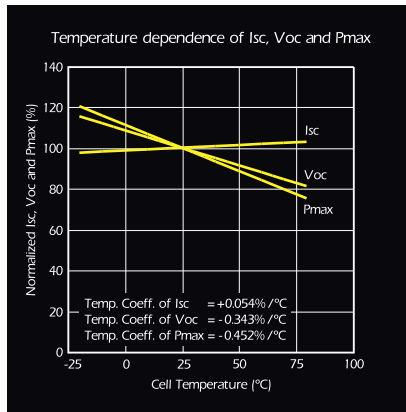
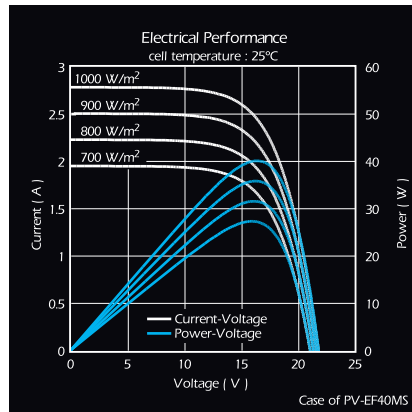
Manufacturer	MITSUBISHI ELECTRIC			
Model name	PV-EF52MS	PV-EF46MS	PV-EF40MS	PV-EF35MS
Cell type	Polycrystalline Silicon, 52mm x 156mm			
Number of cells	36 cells in a series			
Maximum power rating(Pmax)	52W	46W	40W	35W
Warranted minimum Pmax	52W	46W	40W	35W
Tolerance of maximum power rating	+15/-0%			
Open circuit voltage (Voc)	22.0V	21.9V	21.8V	21.7V
Short circuit current (Isc)	2.89A	2.84A	2.78A	2.74A
Maximum power voltage (Vmp)	18.7V	17.5V	16.4V	15.4V
Maximum power current (Imp)	2.78A	2.62A	2.44A </td <td>2.27A</td>	2.27A
Normal operating cell temperature(NOCT)	47.5 degree C			
Maximum system voltage	DC 600V			
Fuse rating	15A			
Dimensions	559x674x46mm (22.0x26.5x1.81inch)			
Weight	5.5kg (12.1lbs.)			
Module efficiency	13.8%	12.2%	10.6%	9.3%
Packing condition	2 pcs - 1 carton			
Certificate	IEC 61215 edition 2			

DRAWINGS AND DIMENSIONS

Unit : mm (inch)



ELECTRICAL CHARACTERISTICS



SALES COMPANY MITSUBISHI ELECTRIC
MITSUBISHI ELECTRIC ASIA PTE LTD
 307 Alexandra Road Singapore 159943
 Phone: +65-6470 2601 FAX: +65-6476 0590
www.MitsubishiElectric.com.sg

MITSUBISHI ELECTRIC CORPORATION
 HEAD OFFICE: TOKYO BLDG., 2-7-3, MARUNOUCHI, CHIYODA-KU, TOKYO 100-8310, JAPAN
<http://Global.MitsubishiElectric.com/solar>