



Exhaust Ventilation Fans

From
32dBA

Ducted Exhaust Ventilation Fans

Introducing the Mitsubishi Electric Ducted Exhaust Fan range featuring ball bearing motors that are hard working enough for commercial applications while still being quiet and stylish for domestic use.

Quiet Operation

Mitsubishi Electric Ventilation Fans feature low vibration and are perfect for hotels and apartments where noisy fans would disturb both the user and others in the same building.

Mitsubishi Electric Ventilation Fans improve indoor air quality by quickly exhausting contaminants and moisture.

- Quiet operation from 32dBA.
- Highest energy efficiency for increased savings.
- Centrifugal fan with ball bearing motor for continuous use and long life.
- Dual shutters to block external noise and outside air.
- Ideal for new home construction, upgrading existing homes and commercial exhaust ventilation projects.
- Easy installation and access to fan & fan motor, no need to add maintenance access.



Plastic Grille
VD-10Z/15Z/15ZP

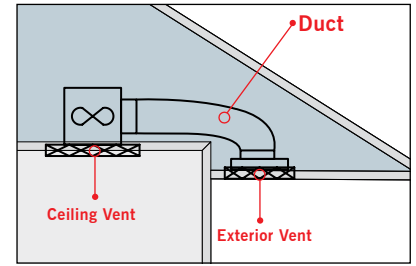


Metal Grille
VD-18Z/20Z

Specification Table

| Model | Current (A) | Power (W) | Frequency (Hz) | RPM | Air Volume (l/s) / (m ³ /h) | Noise (dBA) | Weight (kg) |
|---------|-------------|-----------|----------------|-----|--|-------------|-------------|
| VD-10Z | 0.11 | 16 | 50 | 880 | 28 / 100 | 32 | 2.2 |
| VD-15Z | 0.11 | 26 | 50 | 710 | 49 / 175 | 32 | 3.5 |
| VD-15ZP | 0.12 | 28 | 50 | 870 | 60 / 215 | 37 | 3.5 |
| VD-18Z | 0.16 | 34 | 50 | 590 | 88 / 315 | 36 | 5.7 |
| VD-20Z | 0.22 | 50 | 50 | 750 | 117 / 420 | 39 | 6.5 |

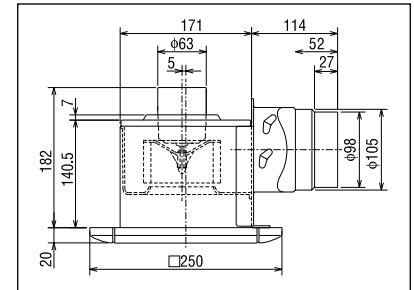
Typical Installation



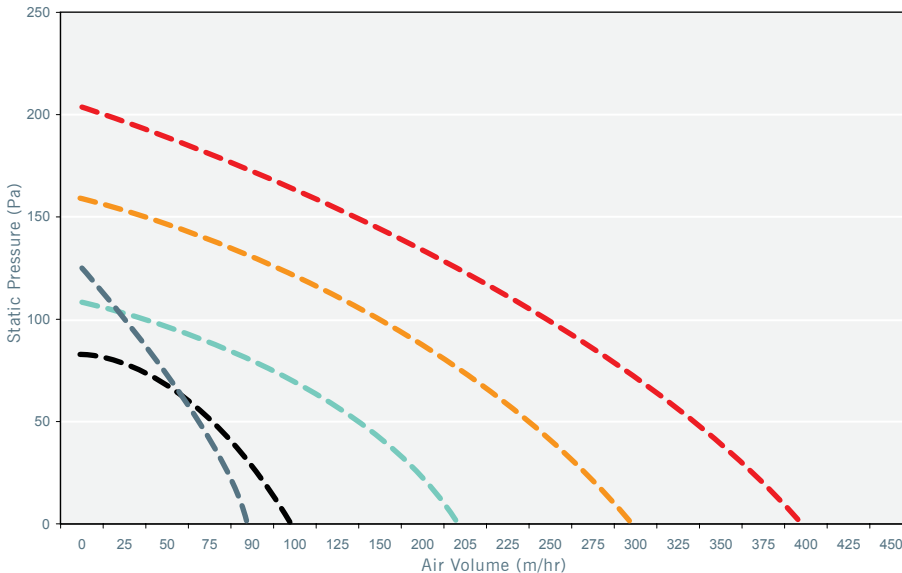
Dimension Table

| Model | Fan (exclude spigot) | | | Type | Grille Type | | | Duct Dia (mm) |
|---------|----------------------|--------|--------|---------|-------------|--------|--------|---------------|
| | W (mm) | D (mm) | H (mm) | | W (mm) | D (mm) | H (mm) | |
| VD-10Z | 171 | 171 | 182 | Plastic | 250 | 250 | 20 | 100 |
| VD-15Z | 251 | 251 | 204 | Plastic | 330 | 330 | 20 | 100 |
| VD-15ZP | 251 | 251 | 204 | Plastic | 330 | 330 | 20 | 100 |
| VD-18Z | 270 | 270 | 243 | Metal | 334 | 334 | 15 | 150 |
| VD-20Z | 307 | 307 | 243 | Metal | 380 | 380 | 15 | 150 |

Layout: VD-10Z



Static Pressure Fan Curve

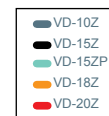


Note:

Flexible Duct Connections:

VD-10Z, 15Z & 15ZP use 100mm Ø
VD-18Z, 20Z use 150mm Ø

IP Rating : IPX3



Room Size Guide* [ACH = Air Changes Per Hour]

| Model | VD-10Z | VD-15Z | VD-15ZP | VD-18Z | VD-20Z |
|----------------------|---------------------------------|---------------------------------|-------------------------------|---------------------------------|----------------------------------|
| Air Flow | 28 l/s / 100.8m ³ /h | 49 l/s / 176.4m ³ /h | 60 l/s / 216m ³ /h | 88 l/s / 316.8m ³ /h | 117 l/s / 421.2m ³ /h |
| Noise Level | 32 dBA | 32 dBA | 37 dBA | 36 dBA | 39 dBA |
| Power Consumption | 16 w | 26 w | 28 w | 34 w | 50 w |
| Toilets - Domestic | 2 ACH > 50m ³ | > 87m ³ | > 107m ³ | > 157m ³ | > 210m ³ |
| Offices | 4 ACH > 25m ³ | > 43m ³ | > 53 m ³ | > 78m ³ | > 105m ³ |
| Bathrooms | 5 ACH > 20m ³ | > 35m ³ | > 43m ³ | > 63m ³ | > 84m ³ |
| Meeting Rooms | 5 ACH > 20m ³ | > 35m ³ | > 43m ³ | > 63m ³ | > 84m ³ |
| Toilets - Commercial | 8 ACH > 12m ³ | > 21m ³ | > 26m ³ | > 39m ³ | > 52m ³ |
| Kitchens - Domestic | 10 ACH > 10m ³ | > 17m ³ | > 21m ³ | > 31m ³ | > 42m ³ |

* Guide is for the fan only, please allow for ducting as per the Static Pressure Table above.

MITSUBISHI ELECTRIC
www.mitsubishi-electric.co.nz



Black Diamond Technologies

Exclusive distributor of Mitsubishi Electric products in New Zealand.

WELLINGTON
// HEAD OFFICE

1 Parliament Street
PO Box 30772
Lower Hutt 5040

Phone (04) 560 9147
Fax (04) 560 9133

AUCKLAND
// LOCAL OFFICE

Unit 1, 4 Walls Road
PO Box 12726
Penrose, Auckland 1642

Phone (09) 526 9347
Fax (09) 526 9369

CHRISTCHURCH
// LOCAL OFFICE

44 Halwyn Drive
PO Box 16904
Hornby, Christchurch 8441

Phone (03) 341 2837
Fax (03) 341 2838

New publication effective **May 2013**. All features and specifications are subject to change and amendment at any time.

Where specifications are critical to design or pre-build we advise that you seek confirmation of accuracy from our product management team on (04) 560 9100