



E exhaust Ventilation Fans

From
32dBA 

Ducted Exhaust Ventilation Fans

Introducing the Mitsubishi Electric Ducted Exhaust Fan range featuring ball bearing motors that are hard working enough for commercial applications while still being quiet and stylish for domestic use.

Quiet Operation

Mitsubishi Electric Ventilation Fans feature low vibration and are perfect for hotels and apartments where noisy fans would disturb both the user and others in the same building.

With the VD-10Z and VD-15Z at a quiet 32dBA.

Mitsubishi Electric Ventilation Fans improve indoor air quality by quickly exhausting contaminants and moisture.

- Quietest fans on the market.
- Highest energy efficiency for increased savings.
- Centrifugal fan with ball bearing motor for continuous use and long life.
- Dual shutters to block external noise and outside air.
- Ideal for new home construction, upgrading existing homes and commercial exhaust ventilation projects.
- Easy installation and access to fan & fan motor, no need to add maintenance access.



Plastic Grille
VD-10Z/15Z/15ZP

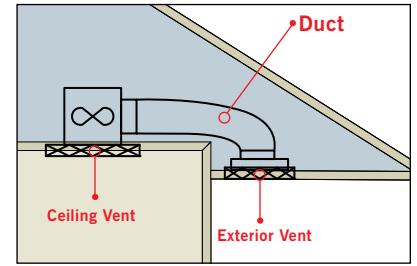


Metal Grille
VD-18Z/20Z

Specification Table

Model	Current (A)	Power (W)	Frequency (Hz)	RPM	Air Volume (l/s) / (m ³ /h)	Noise (dBA)	Weight (kg)
VD-10Z	0.11	16	50	880	28 / 100	32	2.2
VD-15Z	0.11	26	50	710	49 / 175	32	3.5
VD-15ZP	0.12	28	50	870	60 / 215	37	3.5
VD-18Z	0.16	34	50	590	88 / 315	36	5.7
VD-20Z	0.22	50	50	750	117 / 420	39	6.5

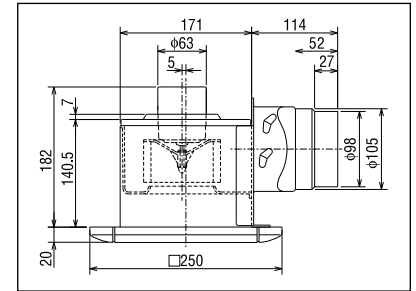
Typical Installation



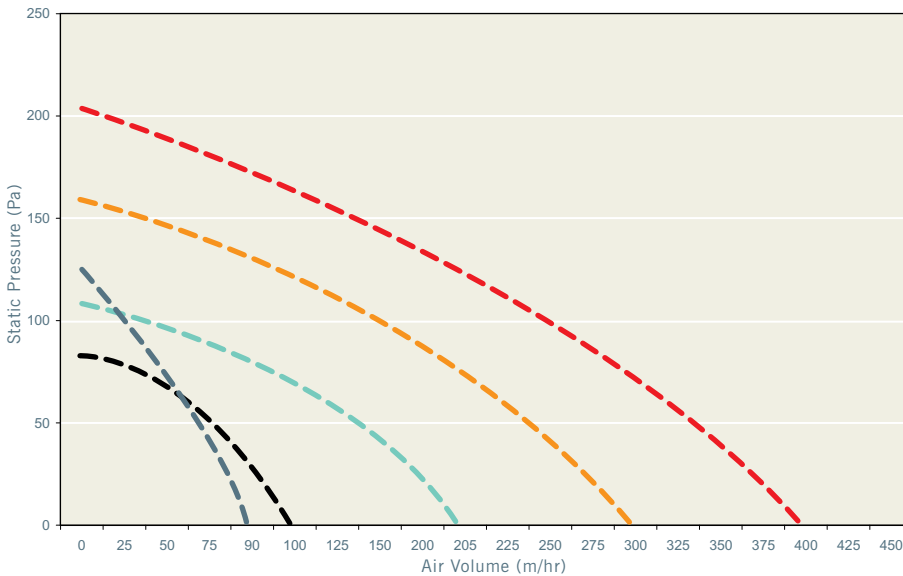
Dimension Table

Model	Fan (exclude spigot)			Type	Grille Type			Duct Dia (mm)
	W (mm)	D (mm)	H (mm)		W (mm)	D (mm)	H (mm)	
VD-10Z	171	171	182	Plastic	250	250	20	100
VD-15Z	251	251	204	Plastic	330	330	20	100
VD-15ZP	251	251	204	Plastic	330	330	20	100
VD-18Z	270	270	243	Metal	334	334	15	150
VD-20Z	307	307	243	Metal	380	380	15	150

Layout: VD-10Z



Static Pressure Fan Curve



Note:

Flexible Duct Connections:

VD-10Z, 15Z & 15ZP use 100mm Ø
VD-18Z, 20Z use 150mm Ø



Room Size Guide* [ACH = Air Changes Per Hour]

Model	VD-10Z	VD-15Z	VD-15ZP	VD-18Z	VD-20Z
Air Flow	28 l/s	49 l/s	60 l/s	88 l/s	117 l/s
Noise Level	32 dBA	32 dBA	37 dBA	36 dBA	39 dBA
Power Consumption	16 w	26 w	28 w	34 w	50 w
Toilets - Domestic	2 ACH	> 50m ³	> 87m ³	> 107m ³	> 210m ³
Offices	4 ACH	> 25m ³	> 43m ³	> 53 m ³	> 105m ³
Bathrooms	5 ACH	> 20m ³	> 35m ³	> 43m ³	> 84m ³
Meeting Rooms	5 ACH	> 20m ³	> 35m ³	> 43m ³	> 84m ³
Toilets - Commercial	8 ACH	> 12m ³	> 21m ³	> 26m ³	> 52m ³
Kitchens - Domestic	10 ACH	> 10m ³	> 17m ³	> 21m ³	> 42m ³

* Guide is for the fan only, please allow for ducting as per the Static Pressure Table above.



Distributed by B D T

AUCKLAND

Unit 1, 4 Walls Road
PO Box 12-726, Penrose
Phone (09) 526 9347, Fax (09) 526 9369

WELLINGTON (HEAD OFFICE)

1 Parliament Street
PO Box 30-772, Lower Hutt
Phone (04) 560 9147, Fax (04) 560 9133

CHRISTCHURCH

Suite 2, Level 1, 37 Mandeville Street
PO Box 1604, Christchurch
Phone (03) 341 2837, Fax (03) 341 2838

www.bdt.co.nz / 0800 QUIET AIR

New publication effective January 2009. All features and specifications are subject to change and amendment at anytime.
Where specifications are critical to design or pre-build we advise that you seek confirmation of accuracy from our product management team on (04) 560 9100.