



MITSUBISHI ELECTRIC

Changes for the Better

MITSUBISHI VIDEO COPY PROCESSOR CP31W

Debuting an outstanding multi-function printer that responds to your every need.

Image Analysis Field

For testing and analytical prints taken with microscopes or other fine instruments.

Security Field

For surveillance and crime prevention video camera image prints for use with ATMs, at convenience stores and other venues.

Medical Image Field

Optimal color reproduction in an impressive range of medical instruments.



High resolution
423DPI



VIDEO COPY
PROCESSOR **NEW**
CP31W

■ **High-speed output – 16 seconds for S-size prints.**

S-size: 16 sec.

L-size: 25 sec.

* With use of standard type paper and ink ribbon cassette.

■ **Equipped with high-performance DSP and a new head drive engine, for stunning resolution reproduction.**

Instantly achieve optimum control of the high-resolution 423DPI thermal head over a 16-bit wide dynamic range, ensuring vivid, smear-free gradation.



● New head control engine

The key to vivid, smear-free gradation.



● Conventional model

● CP31W

Enhanced reproduction for each line and dot, with smart clarity in horizontal lines and small letters.



● Conventional model

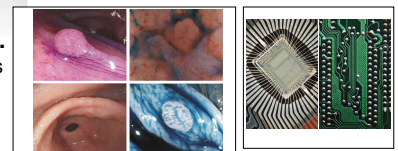
● CP31W

● Conventional model

● CP31W

■ **Multi-print function expands applications.**

Choose between multi-prints split into 2 or 4 frames.



■ **The ideal environment for medical printers.**

Equipped with a selection of gamma curves to handle ultrasonic diagnosis systems, endoscopes and other sophisticated medical instruments, simplifying user gamma curve fine-tuning and color adjustment. Also features retinal camera use strobe synchronized response function, and compatibility with the RS-232C and footswitches.

■ **Quieter design for the medical frontline.**

Operation noise reduced by approximately 6dB (in standby mode).

■ **Large-capacity 32Mb memory engineered to handle 8-frame memory.**

The processor is equipped with a large-capacity 32Mb memory supporting high throughput performance, enabling storage of a steady stream of frames to be printed out from among all selections. Memory capacity of up to 8 frames.

MITSUBISHI VIDEO COPY PROCESSOR

Essential front access improves user ease.



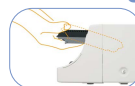
Automatic loading for trouble-free ribbon cartridge replacement.

Control panel tucks neatly into the unit for storage.



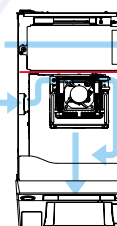
Paper cassette crafted for easy mounting.

Space-saving unit storage.



Effective heat and dust case design.

Optimum air duct design draws out dust more efficiently than ever before.



Lighting to track print status.



Paper catcher with plenty of space to spare.



Specifications

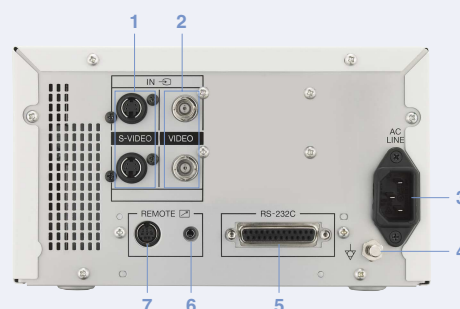
Item	Details
Printing system	Dye-sublimation thermal transfer full color
Head resolution	423DPI
Print resolution	S-size: 1600 x 1200 dots L-size: 2100 x 1600 dots
Gradation	256 gradation each for YMC 16.7-million-hue full color
Print paper	Cut paper
Ink ribbon	3P Y (yellow) + M (magenta) + C (cyan) (specialized ribbon cartridges) 4P Y (yellow) + M (magenta) + C (cyan) + Overcoat (specialized ribbon cartridges)
Printed form size (mm)	S-size: 100 x 94mm L-size: 148 x 100mm
Print size (mm)	S-size: 96 x 72mm L-size: 126 x 96mm
Paper capacity (sheets)	3P S-size: 80 sheets L-size: 50 sheets 4P S-size: 60 sheets L-size: 40 sheets
Printing time (standard mode)	3P S-size: Approx. 16 sec. L-size: Approx. 25 sec. 4P S-size: Approx. 20 sec. L-size: Approx. 31 sec.
Interface	S-video, composite video
Input Signal	NTSC / PAL automatic switching
Video memory	8-frame memory
Control terminal	RS-232C (D-SUB25 pin) Remote terminal (MINI DIN 8 pin, stereo mini-jack)
Dimensions	Width 212 x height 125 x depth 425mm
Weight	Approx 7.6kg
Power supply	AC120 / 220V - 240V, 50 / 60Hz
Power consumption	1.7A (AC120V), 1.0A (AC220V) / Standby: 0.3A
Accessories	Power cord, instruction manual, paper cassette

*Because this processor is not a medical device, printed images should not be used for diagnostic purposes.

Optional (paper / ink ribbon set, footswitch)

Model Name	Specifications
CK30S	S-size standard printing paper & ribbon cartridge, 80sheets x 3packs
CK30L	L-size standard printing paper & ribbon cartridge, 50sheets x 4packs
CK30S4P	S-size overcoat printing paper & ribbon cartridge, 60sheets x 3packs
CK30L4P	L-size overcoat printing paper & ribbon cartridge, 40sheets x 4packs
R800F	footswitch

Part Names



- 1.S-VIDEO image input/output terminal
- 2.VIDEO Image input/output terminal
- 3.AC LINE socket
- 4.Equipotential terminal
- 5.RS-232C connected terminal
- 6.REMOTE 1 terminal (stereo jack)
7. REMOTE 2 terminal (MINI DIN8 pin)

External Dimensions (unit: mm)



MITSUBISHI ELECTRIC CORPORATION
HEAD OFFICE : TOKYO BLDG., 2-7-3, MARUNOUCHI, CHIYODA-KU, TOKYO 100-8310, JAPAN